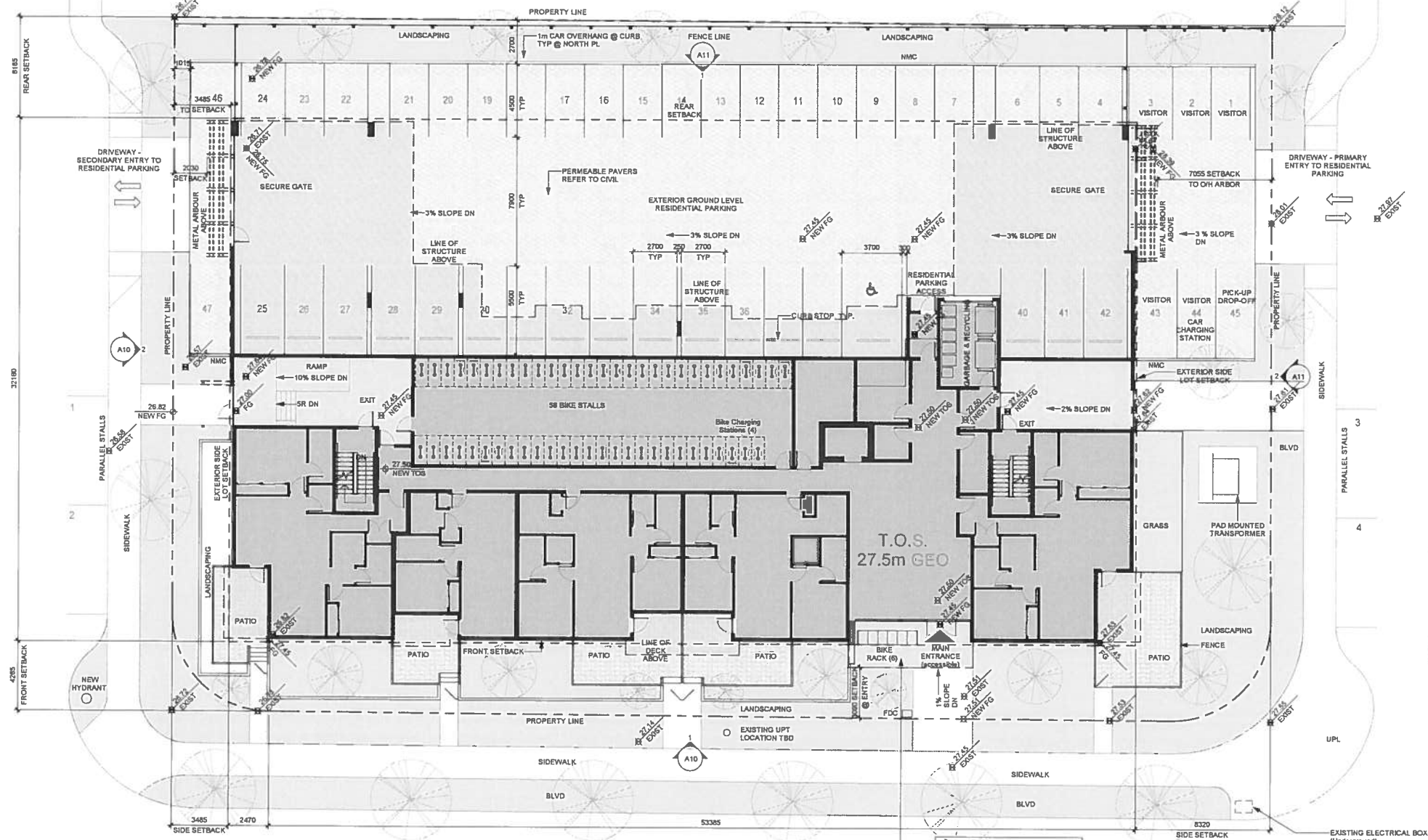




KEATS STREET

WORDSWORTH STREET



NOTE:  
PLEASE ALLOW FOR A RELAXATION  
FOR ENTRY CANOPY WHICH  
PROJECT'S 1300mm INTO FRONT YARD  
(100mm BEYOND WHAT SECTION 5 OF  
ZONING ALLOWS)

NORTH DAIRY ROAD

**RECEIVED**  
AUG 25 2017  
PLANNING DEPT.  
DISTRICT OF SAANICH